

# Fiery Productivity Package

for the Fiery Printing System 11/12

## Achieve the Maximum Productivity and the Right Colour Quickly and Easily

Meeting tight turnaround times and producing top notch colour documents the first time are critical to your business success. The Fiery® Productivity Package from EFI™, an option for the Fiery Printing System 11/12 driving the TA Triumph-Adler colour systems, helps you accomplish both goals, while producing faster turnaround times, error-free colour, and process automation to make you more productive than ever before.

With the Fiery Productivity Package, you can take advantage of Fiery's powerful features to do things such as:

- Troubleshoot colour issues effectively to get jobs printed right quickly with Postflight and Fiery ImageViewer.
- Adjusts all images in a job individually for the perfect print.
- Eliminate bottlenecks and optimise production while maximising throughput with Rush Print and Print/Process Next.
- Automate job submission to shorten set-up times and decrease print errors with Hot Folders and Virtual Printers.

### Produce the Right Colour with Intuitive Tools

#### Harness Dynamic Prepress Capabilities

**Fiery ImageViewer** gives you fast local and remote soft-proofing tools for preview and colour editing capabilities in Fiery Command WorkStation®. It's the ideal tool for inspecting colour accuracy, trapping effects and screen patterns.

**PostFlight Report** offers you the ultimate job diagnostic tool using Fiery colour management technology. The colour coded reports enable you to identify potential printing issues, such as mixed source colours and spot colours quickly and easily.

**Image Enhance Visual Editor\*** offers an interactive toolset for optimising image appearance and doing custom corrections fast. It gives the control to adjust brightness, contrast, highlights, shadows, colour balance, sharpness, and it makes red-eye corrections on any image.

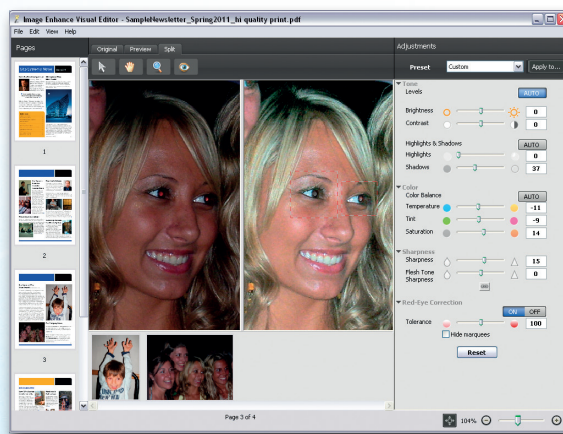


Image Enhance Visual Editor

#### Leverage Proofing Tools for Greater Colour Control

By using the **Control Bar**, you get effective colour quality control, consistent results and job identification on every printed page by applying customised dynamic job information and images, including logos or colour bar, to a job.

Get full control over trapping parameters and adapt to different printing conditions with **Configurable Auto Trapping**. The trapping process is fast and automatically corrects mis-registration.

With **Paper Simulation**, you can achieve accurate output simulations on special media, such as newspaper, yellow pages and packaging, by adjusting the hue, brightness and saturation of the paper substrate being simulated.

\*Requires Fiery Command WorkStation v5.3. Download for free at [www.efi.com/cws5](http://www.efi.com/cws5)

## Fiery Productivity Package



For more information  
contact your local  
Fiery server supplier  
or go to  
[www.efi.com/fiery](http://www.efi.com/fiery)

EFI's portfolio of  
integrated solutions  
increases productivity  
and improves your  
bottom line. Find out  
more at [www.efi.com](http://www.efi.com).

## Boost your Productivity with Advanced Production Tools

### Automate Job Submission for Error-Free Output

**Hot Folders** enables you to do more work by automating the job submission process, reducing errors and automating repetitive tasks with a simple "drag-and-drop" operation. The feature can be published and shared with multiple users in your network enabling faster, error-free printing.

Hot Folders feature works with the following file formats:

Input formats:

- PS, PDF, EPS, VDP.
- Microsoft® Office Filters: DOC, DOCX, XLS, XLSX, PPT, PPS, PPTX, PPSX, PUB.
- Graphic Arts Filters for Hot Folders: JPEG, TIFF/IT, CT/LW, PDF2Go, Export PS, EPS and DCS2.

**Virtual Printers** also makes printing on the Fiery even easier. Now, you can streamline job set-up times and eliminate print errors on repetitive print jobs. By using predefined job settings in the print driver, regular print jobs can be automated in a snap, reducing errors for trouble-free printing.

### Integrate your Workflow and Stretch your Business

**Graphic Arts Filters** for Hot Folders enables you to take advantage of drag-and-drop functionality to automate job submission for more file formats. With these filters, your print jobs can be submitted by simply dragging and dropping native file formats into Fiery Hot Folders without first opening the native applications. Supported file formats include: JPEG, TIFF/IT, CT/LW, PDF2Go, Export PS, EPS and DCS2.

Imagine the time savings that you can achieve when printing a photo contact sheet by simply dropping multiple JPEG photos into a Hot Folder programmed with n-up imposition. The Fiery server merges the JPEG photos into one file and does the imposition layout automatically to guarantee error-free results.

The **PDF/X Preflight Filter** enables you to verify the compliance of all PDF files with PDF/X-1 and PDF/X-3 specifications to guarantee consistent print output throughout the shop.

### Get Efficient Printing with Advanced Job Management

Get full control of your job priorities with **Print/Process Next**. Print/Process Next gives you the ability to make a job print immediately after completing the job that is currently printing.

### Guarantee High Level of Document Confidentiality

Ensure complete document removal with **Secure Erase** feature. It is designed to delete ALL traces of job data from the Fiery hard disk drive. When deleted, the space occupied by each job data file is overwritten three times, eliminating the possibility of restoring the data to intelligible form. Secure Erase uses an algorithm based on US Department of Defense (DoD) specification DoD5220.22M.

For more information, contact your sales representative regarding the Fiery Productivity Package today, or visit [www.efi.com/productivitypackage](http://www.efi.com/productivitypackage).



Electronics For Imaging UK Ltd  
Manor Farm, High Street  
Dronfield, Derbyshire S18 1PY  
United Kingdom

+44 (0)1246 298000 tel  
+44 (0)1246 412401 fax

[www.efi.com](http://www.efi.com)

Auto-Count, BioVu, BioWare, ColorWise, Command WorkStation, Digital StoreFront, DocBuilder, DocBuilder Pro, DocStream, EDOX, the EFI logo, Electronics For Imaging, Fabrivu, Fiery, the Fiery logo, Inkware, Jetrion, MicroPress, OneFlow, PressVu, Printelect, PrinterSite, PrintFlow, PrintMe, PrintSmith Site, Prograph, RIP-While-Print, UltraVu and VUTEk are registered trademarks of Electronics for Imaging, Inc. in the U.S. and/or certain other countries. BESTColor is a registered trademark of Electronics for Imaging GmbH in the U.S. The APPS logo, AutoCal, Balance, ColorPASS, Dynamic Wedge, EFI, Estimate, Fast-4, Fiery Driven, the Fiery Driven logo, Fiery Link, Fiery Prints, the Fiery Prints logo, Fiery Spark, FreeForm, Hagen, the Jetrion logo, Logic, Pace, Printcafe, the PrintMe logo, PrintSmith, Print to Win, PSI, PSI Flexo, Rastek, the Rastek logo, RIPChips, SendMe, Splash, Spot-On, UltraPress, UltraTex, UV Series 50, VisualCal, the VUTEk logo and WebTools are trademarks of Electronics for Imaging, Inc. in the U.S. and/or certain other countries. Best, the Best logo, Colorproof, PhotoXposure, Remoteproof, and Screenproof are trademarks of Electronics for Imaging GmbH in the U.S. and/or certain other countries. All other terms and product names may be trademarks or registered trademarks of their respective owners, and are hereby acknowledged.